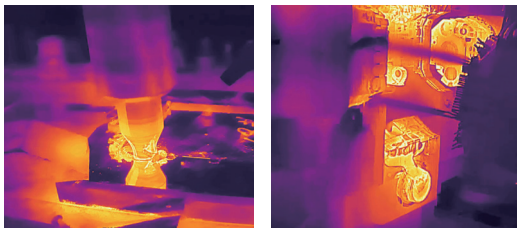


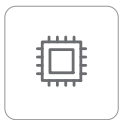
AT31

Motorized Focusing Thermal Camera

AT31 is a high-performance and high-accuracy electric-focusing thermal camera with an uncooled infrared FPA detector and multiple lenses choose. The device supports multiple protocols such as RTSP, ONVIF, and GB28181 .Equipping with professional temperature measurement analysis software and SDK that facilitating system integration. Be suitable for temperature monitoring and imaging in electronic circuits, scientific research, industrial automation and other application fields.

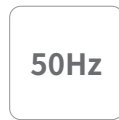


Product Highlights



**384×288
infrared resolution**

Clear images



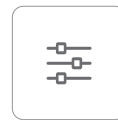
A frame rate of 50Hz

High-speed data acquisition



**-20°C~+550°C
Wide measurement range**

Suitable for application in multiple scenarios



Gigabit network interface

Real-time transmission of temperature status



Electric focusing

Clear and accurate

Lens Parameters

Model	AT31		
Focal Length	7.8mm	15mm	19mm
FOV	47°×35.6°	25°× 18.7°	19.6°×14.7°
IFOV	2.17mrad	1.1mrad	0.89mrad

Specifications

Thermal Imaging Parameters	
Detector	Uncooled VOx detector
Infrared Resolution	384×288
Pixel Pitch	17μm
Spectral Band	8μm~14μm
NETD	<50mK
Temperature Measurement	
Measurement Range	-20°C~+150°C, 0°C~550°C
Measurement Accuracy	±2°C or ±2% of readings
Temperature Measurement Correction	Reflected temperature, ambient temperature, atmospheric transmissivity, object emissivity, distance
Measurement Tool	Settings of measurement rules for a total of 12 points, lines and areas, supporting isotherm setting
Temperature Width Stretch	Support temperature width stretch
Image and Video	
Frame Rate	50Hz
Palettes	18 color palettes including black-hot, white-hot, iron red, rainbow, etc.
Video Standards	H.264, H.265
Thermal Image Capture	Support thermal image capture and secondary analysis
Mirroring	Horizontal/Vertical/Diagonal
Digital Zoom	1.0~8.0 continuous zoom (step size: 0.1)
System Interface	
Communication Interface	RJ45, supporting Gigabit network and customized RS485 for Pecol-D protocol
Video Interface	1-channel analog video
Alarm Interface	1-channel alarm output (optional)
Network protocol	TCP, UDP, ICMP, DHCP, RTSP
Interface Protocol	ONVIF, GB28181
Device Specifications	
Operating Temperature	-20°C~+60°C
Power Supply Mode	10~36V DC, POE
Typical Power Consumption	≤3W
Dimensions	56mm×51mm×119mm
Weight	About 430g

Applications



Electric Device Routine Inspection



Petrochemical Equipment Monitoring



Automatic Control



Scientific Research and Testing & Evaluation

Raythink Technology Co., Ltd.

✉ sales@raythink-tech.com

☎ +86-19806191838

🌐 www.raythink-tech.com

📍 Room 3002, Building 2, No.5 Wanshoushan Road, Fulaishan Street, Yantai Area of China (Shandong) Pilot Free Trade Zone

■ This manual is illustrative only. Technical specifications are subject to change without prior notice.