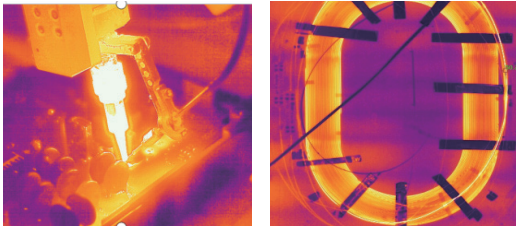




AT61

Motorized Focusing Thermal Camera

AT61 is a high-performance and high-accuracy electric-focusing thermal camera with an uncooled infrared FPA detector and multiple lenses choose. The device supports multiple protocols such as RTSP, ONVIF, and GB28181. Equipping with professional temperature measurement analysis software and SDK that facilitating system integration. Be suitable for temperature monitoring and imaging in electronic circuits, scientific research, industrial automation and other application fields.



Product Highlights



**640×512
infrared resolution**

Clear images



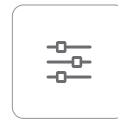
**-20°C to +550°C
Wide measurement range**

Suitable for application in
multiple scenarios



Gigabit network interface

Real-time transmission of
temperature status



**Multiple protocols
such as RTSP and ONVIF**

Easy for back-end integration



Electric focusing

Clear and accurate

Lens Parameters

| Model | AT61 | | |
|--------------|-----------|-----------|-------------|
| Focal Length | 7.8mm | 13mm | 25mm |
| FOV | 54.3°×44° | 33.7°×27° | 17.6°×14.1° |
| IFOV | 1.54mrad | 0.92mrad | 0.48mrad |

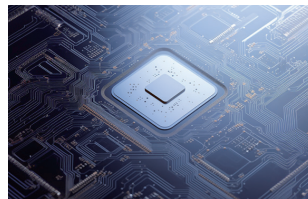
Specifications

| Thermal Imaging Parameters | |
|------------------------------------|------------------------------------------------------------------------------------------------------|
| Detector | Uncooled VOx detector |
| Infrared Resolution | 640×512 |
| Pixel Pitch | 12μm |
| Spectral Band | 8μm~14μm |
| NETD | <50mK |
| Temperature Measurement | |
| Measurement Range | -20°C~+150°C, 0°C~550°C |
| Measurement Accuracy | ±2°C or ±2% of readings |
| Temperature Measurement Correction | Reflected temperature, ambient temperature, atmospheric transmissivity, object emissivity, distance |
| Measurement Tool | Settings of measurement rules for a total of 12 points, lines and areas, supporting isotherm setting |
| Temperature Width Stretch | Support temperature width stretch |
| Image and Video | |
| Frame Rate | 25Hz |
| Palettes | 18 color palettes including black-hot, white-hot, iron red, rainbow, etc. |
| Video Standards | H.264, H.265 |
| Thermal Image Capture | Support thermal image capture and secondary analysis |
| Mirroring | Horizontal/Vertical/Diagonal |
| Digital Zoom | 1.0~8.0 continuous zoom (step size: 0.1) |
| System Interface | |
| Communication Interface | RJ45, supporting Gigabit network and customized RS485 for Pecol-D protocol |
| Video Interface | 1-channel analog video |
| Alarm Interface | 1-channel alarm output (optional) |
| Network protocol | TCP, UDP, ICMP, DHCP, RTSP |
| Interface Protocol | ONVIF, GB28181 |
| Device Specifications | |
| Operating Temperature | -20°C~+60°C |
| Power Supply Mode | 10~36V DC, POE |
| Typical Power Consumption | ≤3.3W |
| Dimensions | 56mm×51mm×119mm |
| Weight | About 430g |

Applications



Electric Device Routine Inspection



Electronic Circuit



Automatic Control



Scientific Research and Testing & Evaluation

Raythink Technology Co., Ltd.

✉ sales@raythink-tech.com

☎ +86-19806191838

🌐 www.raythink-tech.com

📍 Room 3002, Building 2, No.5 Wanshoushan Road, Fulaishan Street, Yantai Area of China (Shandong) Pilot Free Trade Zone

■ This manual is illustrative only. Technical specifications are subject to change without prior notice.