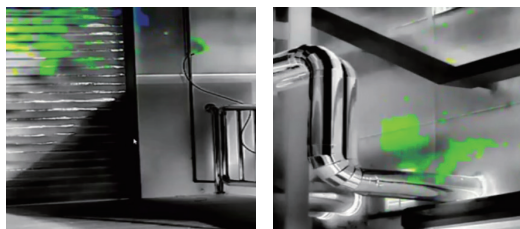




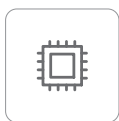
TE464G

Explosion-proof Gas Imaging PTZ

TE464G is a high-performance dual-spectrum gas cloud imaging camera featuring an advanced uncooled infrared detector with a thermal sensitivity of less than 20mK. It holds dual explosion-proof certifications and has a stainless steel body with an IP68 ingress protection rating. The device supports multiple protocols including Modbus TCP, ONVIF, and GB28181, and supports secondary development. It can detect Methane (CH₄), Sulfur Dioxide (SO₂), Freon (R-134a, R-152a) and other gases, and has significant applications in industries such as petroleum extraction and coal processing.



Product Highlights



640×512 infrared resolution
Clear images



Capable of detecting Methane, Sulfur Dioxide, Freon (R-134a, R-152a), and other gases



Dual explosion-proof certification
Suitable for various chemical scenarios



Stainless steel shell
IP68 grade

Applications



Petroleum Extraction



Industrial Chemicals



Coal Processing



Emergency Response and Environmental Protection

Specifications

Thermal Imaging	
Detector Type	VOx uncooled FPA detector
Spectral Band	7~8.5μm
NETD	≤20mK(@25°C,F#1.0,25Hz)
Resolution of Detector	640×512
Pixel Size	12μm
Focal Length	25mm electric focusing lenses
Visible Light Parameters	
Sensor	4MP 1/1.8" Progressive Scan CMOS
Resolution	2688×1520
Focal Length	6.5~130mm, 20x
Gas Detection	
Gases Detectable	Methane (CH ₄), Sulfur Dioxide (SO ₂), Freon (R-134a, R-152a) and other gases
PTZ	
Horizontal Movement	360° continuous, 0.1°~40°/s
Vertical Movement	-90°~+90°, 0.1°~40°/s
Preset Point	256
Scan Mode	Preset point/Patrol inspection group/Pattern/Linear scanning/Area scanning
Wiper	Wiper
Temperature Measurement	
Measurement Range	-20°C~+550°C
Measurement Accuracy	±2°C or ±2% (which is the larger)
Temperature Measurement & Analysis	Support global, point, line, and area temperature measurement rules as well as alarm linkage
Intelligent Functions	
Fire Point Detection	Support
Intelligent Detection	Support tripwire intrusion, and regional intrusion detection
Voice Intercom	Support
Alarm Linkage	Video taking/Image capture
System Interface	
Power Interface	AC85~220V
Communication Interface	RJ45, supporting Gigabit network; 1-channel RS485, supporting Pelco-D protocol expansion (optional)
Audio Interface	1 Input / 1 Output
Storage Interface	Support Micro SD card (up to 256G)
Reset Button	Support
Serial Port	1-channel RS485 interface, supporting Pelco protocol expansion
General Specifications	
Operating Environment	-40°C~+60°C; <90%RH
IP Grade	IP68, Ex d II C T6 Gb/Ex tD A21 IP68 T80°C
Power Consumption	max. 100w
Dimensions	484.5mm×303mm×410 mm
Weight	27kg

Raythink Technology Co., Ltd.

✉ sales@raythink-tech.com

☎ +86-19806191838

🌐 www.raythink-tech.com

📍 Room 3002, Building 2, No.5 Wanshoushan Road, Fulaishan Street, Yantai Area of China (Shandong) Pilot Free Trade Zone

■ This manual is illustrative only. Technical specifications are subject to change without prior notice.